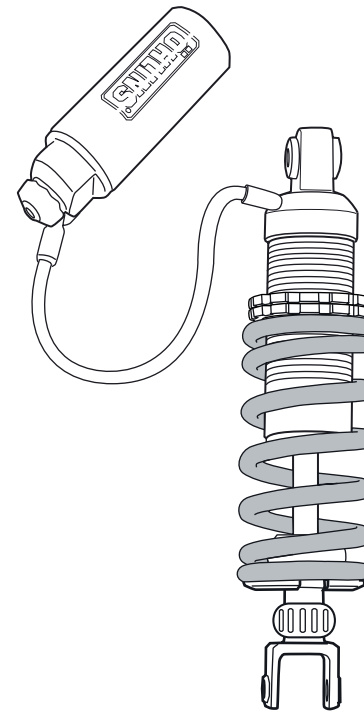


Mounting Instructions

WITH SET-UP DATA

SHOCK ABSORBER SU002 for Suzuki GSX 1100

Before installing this shock absorber, check the contents of the kit listed below. If anything is missing, please contact your nearest Öhlins dealer.



Kit Contents:

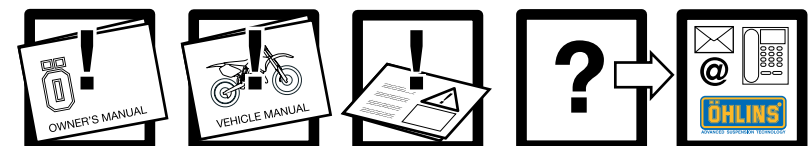
	Part no.	Pcs.
Shock absorber	SU002	1
Mounting rubber	00230-03	2
Tie wrap	00231-01	2
Hose clamp	00643-02	2
Hook spanner	00710-02	1
Öhlins Sticker	00192-01	2
Memo Notes Sticker	01180-01	1
Owner's Manual	07241-02	1

During storage and transportation, especially at high ambient temperature, some of the oil and grease used for assembling may leak and stain the packaging. This is in no way detrimental to the product, wipe off the excessive oil/grease with a cloth.

Set-up Data

Shock absorber length	312 mm
Stroke	70 mm
Spring preload	17 mm
Rebound damping	10 clicks
Compression damping	10 clicks

Before installing this product, read the Öhlins Owner's Manual!



© Öhlins Racing AB. All rights reserved. Any reprinting or unauthorized use without the written permission of Öhlins Racing AB is prohibited.
Printed in Sweden.



Mounting Instructions SU002_1 Issued 2008 05 08
These instructions and other documents can be downloaded from www.ohlins.com

Öhlins Racing AB, Box 722, S-194 27 Upplands Väsby, Sweden.
Phone +46 8 590 025 00 Fax +46 8 590 025 80
www.ohlins.com

HOW TO INSTALL

⚠ WARNING!

It is advisable to have an Öhlins dealer install the shock absorber.

1

Remove the lower part of the fairing.

2

Put the motorcycle on a workstand so that the rear wheel barely touches the ground.

⚠ WARNING!

Make sure the vehicle is securely supported so that it will not tip.

3

Remove the seat and the side covers.

4

Remove the bracket between the two silencers. Remove the *left* silencer.

5

Loosen and remove the lower shock absorber attachment, remove the whole link.

6

Loosen and remove the original reservoir, upper attachment. Remove the original shock absorber from underneath the vehicle.

NOTE!

Recommendation! Before installing the Öhlins shock absorber, clean the vehicle thoroughly.

7

Install the Öhlins shock absorber. First, pull the reservoir and the shock absorber up. Place the reservoir and the shock absorber with the cylinder head to the top. Install according to the figure. Fasten the upper attachment.

8

Install the linkage and the lower attachment.

NOTE!

Lower the motorcycle so that the shock absorber is slightly compressed, before tightening the screws.

9

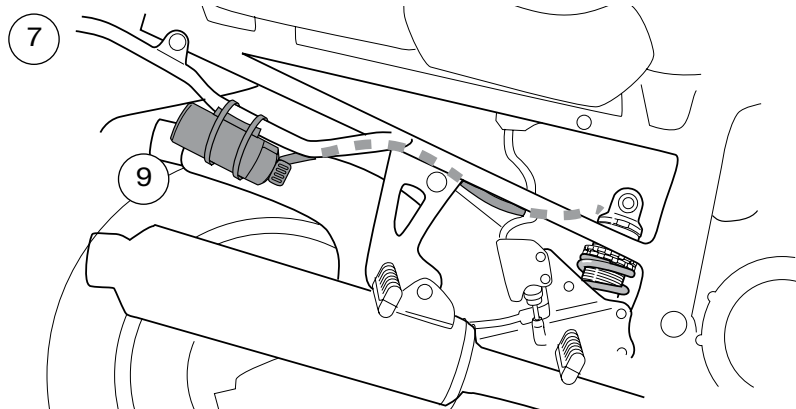
Attach the reservoir, use the mounting rubbers and hose clamps provided. See figure.

10

Reinstall the side cover, seat and the lower fairing.

NOTE!

Make sure that all screws are tightened to the correct torque and that nothing fouls or restricts movement of the shock absorber when the suspension is being fully compressed or extended.

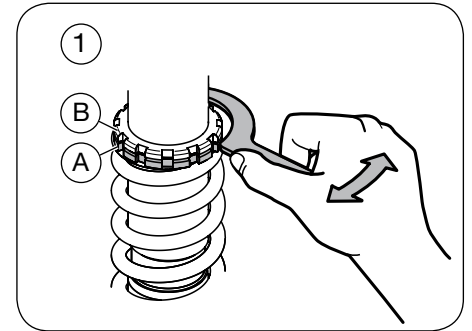


ADJUSTMENTS

Before riding, always ensure that the basic settings made by Öhlins are intact.

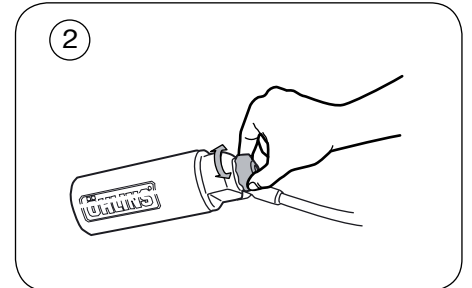
1 Spring pre-load

Use a C-spanner. Unlock the lock nut (B). Turn the spring platform nut (A) clockwise to increase the spring pre-load, turn counter clockwise to decrease it. Lock the setting with the lock nut (B).



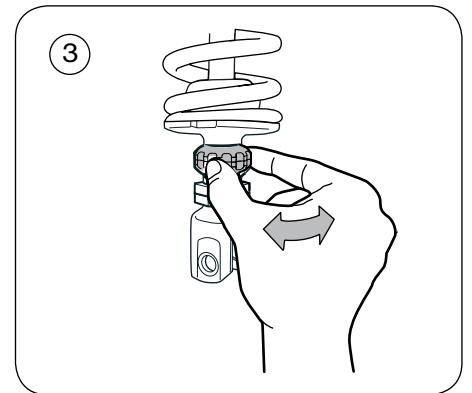
2 Compression

Adjust by turning the knob on top of the reservoir. Turn clockwise to increase damping, turn counter clockwise to decrease.



3 Rebound

Turn the wheel on the piston shaft above the end eye/ bracket. Turn clockwise to increase damping, turn counter clockwise to decrease.



NOTE!

When delivered the Öhlins shock absorber is dialed to recommended settings for the specific brand and make of the vehicle. If you have changed the setting, reset according to the set-up data in the Mounting Instruction.

To reset: The adjuster has a right hand thread. Turn the adjuster clockwise to fully closed (pos. zero [0]). Turn counter clockwise to open and count the clicks until you reach the recommended number in the Set-up data.

CAUTION!

Do not use force, delicate sealing surfaces can be damaged. Handtighten only.